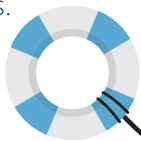




# Disability Resource Services™

## Extra Help When It's Needed Most

When personal problems arise, many people may choose to cope alone, resulting in negative consequences at home and the workplace. This is why we have teamed with ComPsych® Corporation to offer Disability Resource Services to employees who are covered by our long-term disability (LTD) policy and their immediate family. Disability Resource Services provides convenient resources to help address emotional, legal and financial issues.



### Disability Resource Services™

In the U.S. and Canada, call

**866-899-1363**

TDD: 800-697-0353

GuidanceResources.com

Enter Your Company ID: DISRES



BlueCross BlueShield of Montana

### Face-to-Face Sessions

Disability Resource Services provides three face-to-face sessions per issue in a geographically accessible location to address behavioral issues.

### Unlimited Telephonic Support

Disability Resource Services also provides unlimited telephonic support (24 hours a day, 7 days a week) to help address behavioral issues. Master's degree level clinicians use a conversational approach to identify issues, assess needs and refer participants to specialists to help resolve their issues.

### Web-Based Services

GuidanceResources® Online ([guidanceresources.com](http://guidanceresources.com)) is a secure, password-protected website that contains self-assessments, extensive content on personal health and powerful tools to help with personal, relational, legal, health and financial concerns. This service is free of charge to employees who are insured with us for long-term disability insurance and their immediate family. It covers many topics and personal concerns, such as:

- Alcohol and drug abuse
- Depression
- Divorce and family law
- Estate planning
- Getting out of debt
- Grief and loss
- Job pressures
- Managing debt obligations
- Marital and family conflicts
- Retirement planning
- Saving for college
- Stress and anxiety
- Tax questions
- Real estate buying and selling

## To Access Your Services



### Call: 866-899-1363

- You will be asked what type of insurance policy you have: LTD, STD or life insurance. If you are unsure, consult with your HR representative.



### Online: [GuidanceResources.com](http://GuidanceResources.com)

- Click "Register" to create a new account.
- Enter Your Company ID: DISRES

# Your Guide to GuidanceResources® Online

[GuidanceResources.com](https://www.GuidanceResources.com)

## What about financial concerns?

Financial issues can arise at any time, from dealing with debt to saving for college. GuidanceResources® Online is available to provide you with the tools and information you need to help solve your personal money management concerns.

## How can I manage all of my life's little details and the issues my family may face?

Whether you are a new parent, giving care to an elder, sending a child off to college, buying a car or doing home repairs, you're bound to come across concerns that need to be addressed. Let GuidanceResources® Online help you explore your options.

## Where can I get answers to my legal questions?

GuidanceResources® Online provides access to practical, understandable information and tools to help address your concerns about divorce, bankruptcy, buying real estate and other issues.

## Guide to using GuidanceResources.com

1. On the [GuidanceResources.com](https://www.GuidanceResources.com) home page, click on the tab at the top labeled "Register."
2. Enter your **company ID: DISRES**. Create a **username and password**. The username has to be at least six characters long and should have no spaces (for example: joesmith). Make sure that you **complete all required fields, noted with red asterisks**.
3. Read the Terms of Use and click inside the checkbox to indicate your agreement to those terms.
4. When you've finished, **click on the "Submit" button** at the bottom of the page.

GuidanceResources® Online offers web-based services designed to help address the personal concerns and life issues you may be facing.

Whether it's depression, alcohol and drug abuse, or grief and loss, these services are available to you and members of your family at no cost—24 hours a day, 7 days a week.



**ONLINE ACCESS:**  
**GuidanceResources.com**

- Click "Register" to create a new account.
- Enter Your Company ID: DISRES
- FOR FUTURE LOGINS, just go to the member login section and enter your username and password. This will take you directly to **GuidanceResources.com**.

If you have any problems logging in, you can contact: **memberservices@guidanceresources.com** or **877-595-5289**.

## Disability Resource Services™

In the U.S. and Canada, call

**866-899-1363**

TDD: 800-697-0353

[GuidanceResources.com](https://www.GuidanceResources.com)

Enter Your Company ID: DISRES



**BlueCross BlueShield  
of Montana**

For illustrative purposes only. May not be available in all jurisdictions. Coverage may be subject to limitations, exclusions and other coverage conditions contained in the issued policy. Please consult the policy for the actual terms of coverage.

GuidanceResources® Online is offered and administered by ComPsych® Corporation. ComPsych® Corporation is an independent organization that does not provide Blue Cross and Blue Shield of Montana or Dearborn Life Insurance Company products or services. ComPsych® Corporation is solely responsible for the products and services described in this flier.

For employee use only. Blue Cross and Blue Shield of Montana is the trade name of Dearborn Life Insurance Company, an independent licensee of the Blue Cross and Blue Shield Association. BLUE CROSS®, BLUE SHIELD® and the Cross and Shield Symbols are registered service marks of the Blue Cross and Blue Shield Association, an association of independent Blue Cross and Blue Shield Plans.

Blue Cross and Blue Shield of Montana is the trade name of Dearborn Life Insurance Company, an independent licensee of the Blue Cross and Blue Shield Association.